

X-MODULE

X-15 EXPOwire™

Components

PART NO./INFO:

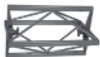
PART NO./INFO:



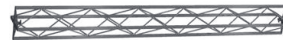
Part no. 5001
15 cm module
Weight: 0,280 kg
Material: Composite & alu.



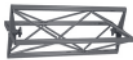
Part no. 5011
165 cm module
Weight: 2,080 kg
Material: Composite & alu.



Part no. 5002
30 cm module
Weight: 0,460 kg
Material: Composite & alu.



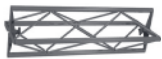
Part no. 5012
180 cm module
Weight: 2,260 kg
Material: Composite & alu.



Part no. 5003
45 cm module
Weight: 0,640 kg
Material: Composite & alu.



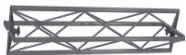
Part no. 5013
195 cm module
Weight: 2,440 kg
Material: Composite & alu.



Part no. 5004
60 cm module
Weight: 0,820 kg
Material: Composite & alu.



Part no. 5014
210 cm module
Weight: 2,620 kg
Material: Composite & alu.



Part no. 5005
75 cm module
Weight: 1,000 kg
Material: Composite & alu.



Part no. 5015
225 cm module
Weight: 2,800 kg
Material: Composite & alu.



Part no. 5006
90 cm module
Weight: 1,120 kg
Material: Composite & alu.



Part no. 5016
240 cm module
Weight: 2,980 kg
Material: Composite and alu.



Part no. 5007
105 cm module
Weight: 1,360 kg
Material: Composite & alu.



Part no. 5022
Cube
Weight: 0,600 kg
Material: Composite and steel



Part no. 5008
120 cm module
Weight: 1,540 kg
Material: Composite & alu.



Part no. 5021
Connector
Weight: 0,050 kg
Material: Composite and steel



Part no. 5009
135 cm module
Weight: 1,720 kg
Material: Composite & alu.



Part no. 5023
Hinge 30-230 deg
Weight: 0,600 kg
Material: Composite & steel



Part no. 5010
150 cm module
Weight: 1,900 kg
Material: Composite & alu.



Part no. 5024
Connector 45 deg.
Weight: 0,400 kg
Material: Composite & steel

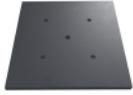
PART NO./INFO:



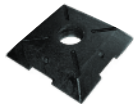
Part no. 5025
Reinforcement
Weight: 0,350 kg
Material: Steel



Part no. 5031
Foot 15 x 15 cm
Weight: 0,200 kg
Material: PEHD



Part no. 5032
Foot 30 x 30 cm
Weight: 0,850 kg
Material: PEHD



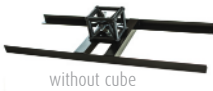
Part no. 5033
Foot 40 x 40 cm
Weight: 8 kg
Material: Metal reinforced PEHD



Part no. 5034
Foot 15 x 60 cm
Weight: 0,650 kg
Material: PEHD



Part no. 5035
Foot 15 x 40 cm
Weight: 0,400 kg
Material: PEHD



without cube

Part no. 5037
Foot for slabs
Weight: 10 kg
Material: Alu



Part no. 5038
40 x 80 cm heavy base
Weight: 26,000 kg
Material: Metal reinforced PEHD



Part no. 5050
L-table 45 x 45 cm
Weight: 1,400 kg
Material: Alu.



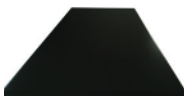
Part no. 5051
Shelf 30 x 60 cm
Weight: 0,900 kg
Material: Alu.



Part no. 5052
Shelf 30 x 90 cm
Weight: 1,300 kg
Material: Alu.



Part no. 5053
Shelf 30 x 120 cm
Weight: 1,700 kg
Material: Alu.

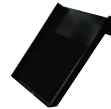


Part no. 5054
Table top, 40 x 120 cm
Weight: 2400 g
Material: Alu.



Part no. 5064
iPad holder
Weight: 0,200 kg
Material: Alu.

PART NO./INFO:



Part no. 5063
Brochure holder - A4
Weight: 0,450 kg
Material: Alu.



Part no. 5062
Brochure holder - A5
Weight: 0,350 kg
Material: Alu.



Part no. 5061
Brochure holder - M65
Weight: 0,250 kg
Material: Alu.



Part no. 3106
Lamp, LED - 25W
Weight: 0,660 kg
Material: Various



Part no. 4043
Lamp, standard - 100W
Weight: 0,800 kg
Material: Plastic



Part no. 4072
Lamp, LED - 50 watt
Weight: 0,600 kg
Material: Plastic



Part no. 4030
Top clips for alu list, in-door
Weight: 0,005 kg
Material: POM



Part no. 4031
Bottom clips - for alu list, in-door
Weight: 0,005 kg
Material: POM & elastic



Part no. 5073
Clip, full face
Weight: 0,010 kg
Material: POM



Part no. 5074
Clip with spring
Weight: 0,015 kg
Material: Pom & steel



Part no. 3045
Alu list - per m.
Weight: 0,110 kg - per m.
Material: Alu.



Part no. 5075
Lamp bracket
Weight: 0,030 kg
Material: POM



Part no. 5076
LCD bracket, set of 2 pcs.
Weight: 1,133 kg
Material: Steel



Part no. 5077
Clip on bracket
Weight: 0,020 kg
Material: POM

PART NO./INFO:



Part no. 3100
Waterfall Bracket
Weight: 0,8 kg
Material: S teel



Part no. 5078
M8 screw w ith o-ring
Weight: 0,025 kg
Material: P A6



Part no. 5079
LCD Center Bracket
Weight: 1,5 kg
Material: S teel

PART NO./INFO:



x1 pcs.

Part no. 5080
Clip for eyelets X-15
Weight: 0,008 kg
Material: POM & Elastic



x100 pcs.

Part no. 5081
Clip for eyelets X-15 (100 pack)
Weight: 0,800 kg
Material: POM & Elastic